

# Factory Case Study

Using Waveteq's Wireless Solution, FormaShape's ISO 9001 80,000 square foot, composites factory extended their office wired LAN network to create an un-tethered work environment throughout their facility. This includes the production floor, shipping dock, mold room, training room, paint shop and outside finished goods storage areas.

The enabled nomadic use of laptops, IP phone communications and wireless barcode scanners has resulted in operational efficiencies through reduced downtime, improved work force coordination and near perfect inventory control.

## The Benefits

- Provides connectivity from all areas of the factory back to the main computer
- Near perfect inventory control
- Custom designed for complete secure wireless coverage indoors and outdoors
- Uses existing infrastructure
- Does not interfere with machinery



***Solid Wireless Broadband***

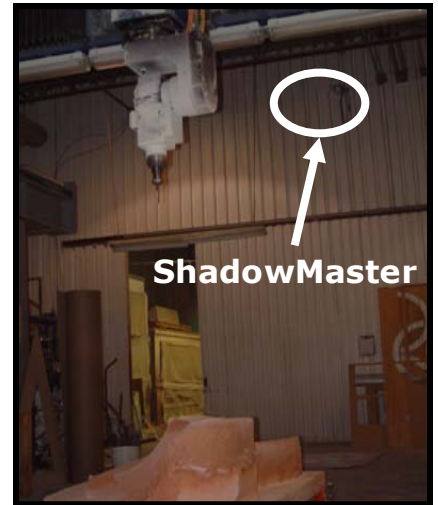
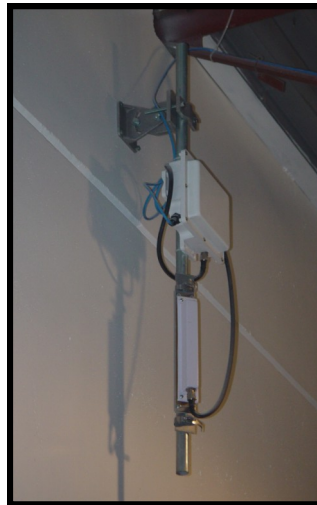
# Factory Case Study

## Quick, Flexible Installs

### About Waveteq

Waveteq Communications Inc, a privately held British Columbia, Canada Corporation, builds and designs robust, multifunctional WiFi radios for rural and underserved markets worldwide.

Our clients include ISP's, major system integrators, public safety, municipal and industrial operations in Africa, Latin America, Europe, and North America.



### The ShadowMount System

- Allows attachments to existing infrastructure
- Robust and reliable
- Easy to assemble

*"The Waveteq system is working very well and it enables us to run our own high capacity wireless network within our plant. Not only do we have a close to perfect tracking system, but we have reduced our inventory count times from 24 hours per month to two. In addition we are now able to deal with discrepancies immediately and resolve these within two days or less from the previous average of 14 days"*

- Peter Jeffery, FormaShape President



#### Waveteq Communications Inc.

Suite 222 - 3121 Hill Road, Lake Country, B.C., Canada, V4V 1G1

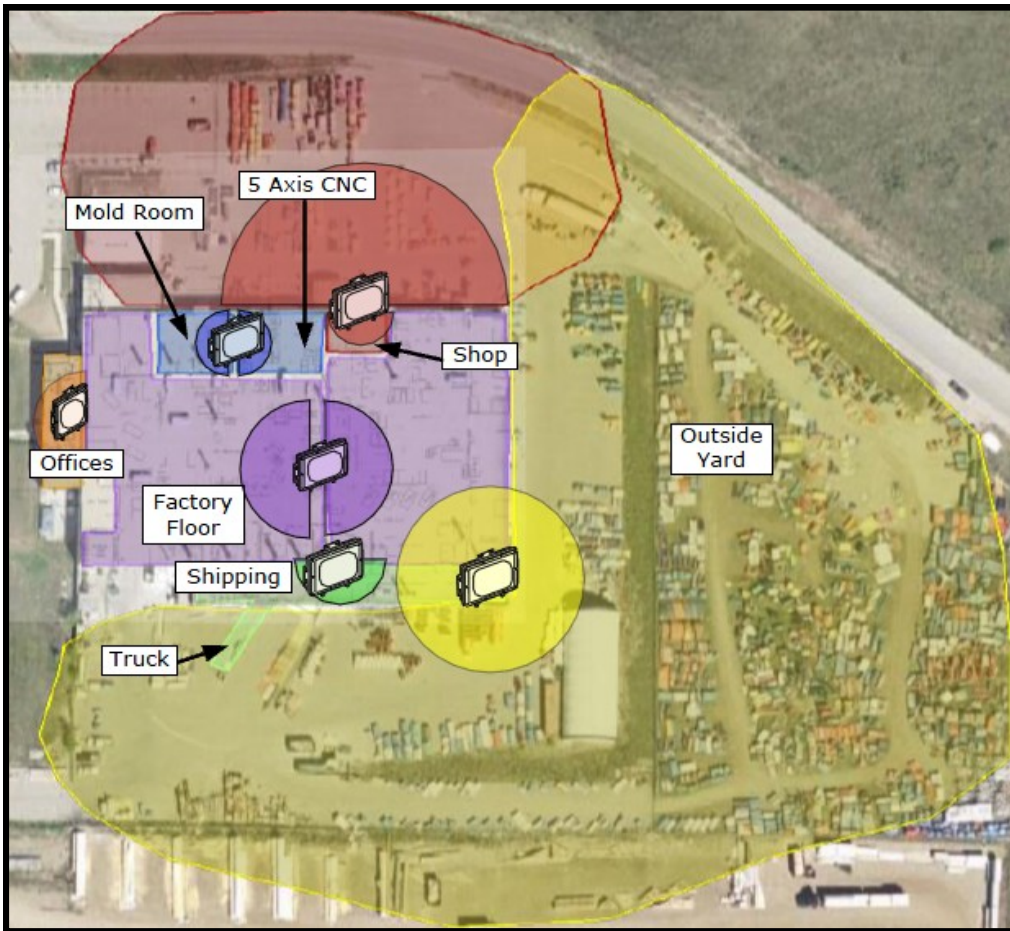
<http://www.waveteq.com>,

Phone: +1-250-766-9229, USA/Can +1-888-WaveTeq, Fax: +1-250-766-9221



# Factory Case Study

## Network Details

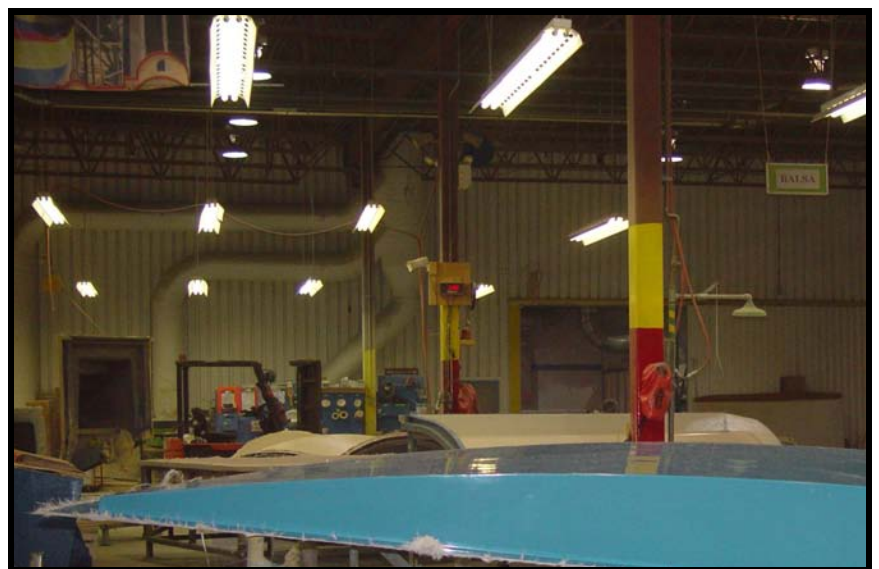


### Network Design

- Detailed engineering to provide a customized solution for each location
- Once laid out, this installation took 2 days to install
- Ensured coverage based upon needs of the factory

For this layout, internet connectivity and powering via PoE is provided to each Waveteq ShadowMaster by extending the office LAN wiring to each location. Metal And Concrete factory walls acted to isolate coverage areas and 180 deg. antennas were used on both sides of a wall to cover adjacent work zones.

The colours in the diagram above show the different radios and the areas that they cover.



#### Waveteq Communications Inc.

Suite 222 - 3121 Hill Road, Lake Country, B.C., Canada, V4V 1G1

<http://www.waveteq.com>,

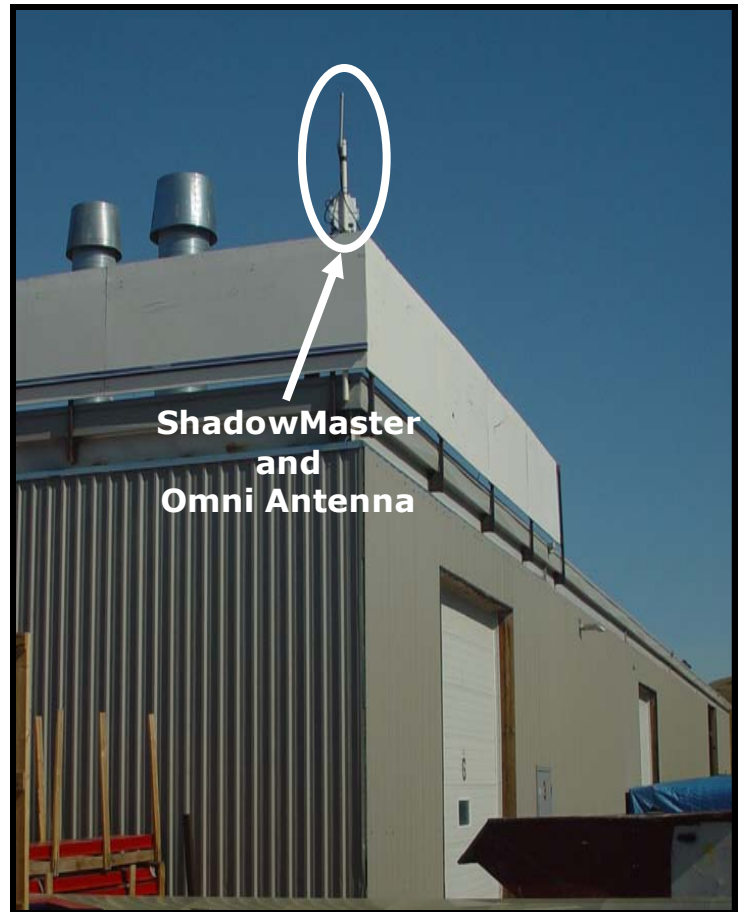
Phone: +1-250-766-9229, USA/Can +1-888-WaveTeq, Fax: +1-250-766-9221

# Factory Case Study

## Application Scenarios

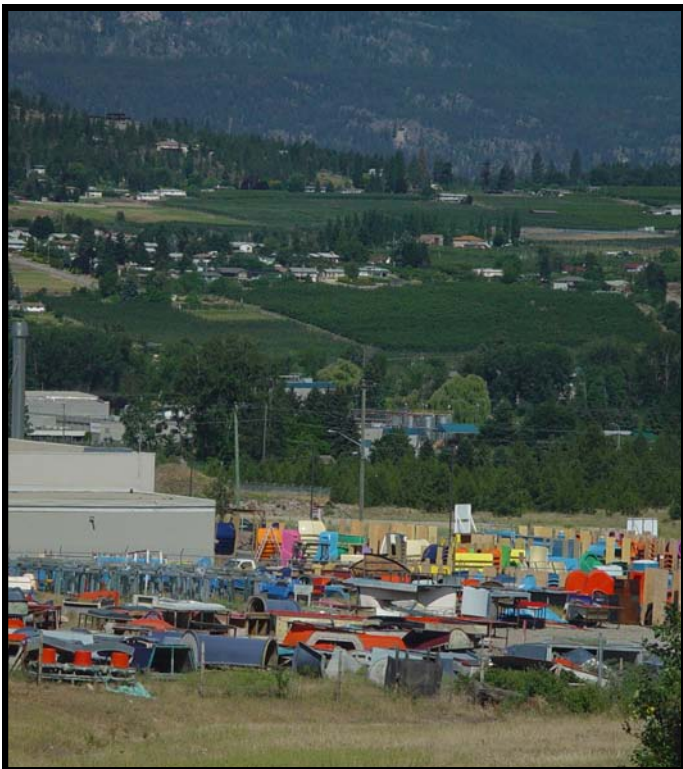
### The Factory Problem

Monitoring and managing the orders at FormaShape from factory floor to crating and shipping to the customers' premises has presented a significant challenge to the Management team at FormaShape. A full slide system might have shipped but there was no way of definitely confirming that the complete order had shipped as opposed to parts having been misplaced at some very large construction sites. The cost to rectify this problem always fell back to the FormaShape organization.



### The Waveteq Solution

The implementation of the Waveteq wireless network facilitated near to perfect inventory control. Bar code readers are extremely accurate. Part numbers are now recorded correctly and components are inventoried correctly and can be traced to a specific crate and truck. This has resulted in significant savings for FormaShape to both costs and reputation. The impact was immediate.



#### Waveteq Communications Inc.

Suite 222 - 3121 Hill Road, Lake Country, B.C., Canada, V4V 1G1

<http://www.waveteq.com>,

Phone: +1-250-766-9229, USA/Can +1-888-WaveTeq, Fax: +1-250-766-9221