



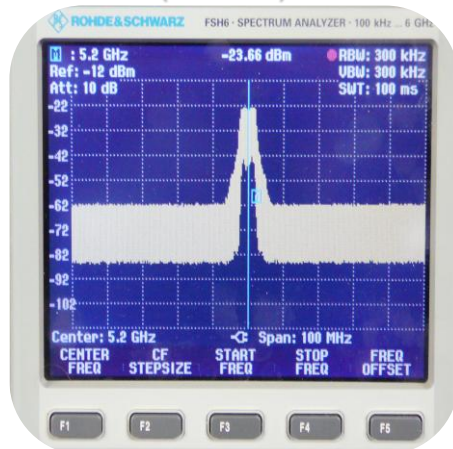
Dynamic Turbo Behaviour
On the ShadowAP
March 21, 2010

NOTES TO MEASUREMENTS:

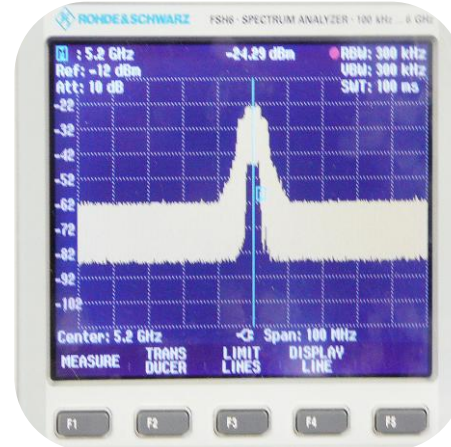
- Dynamic Turbo Behaviour was monitored by setting the turbo mode in each of Quarter, Half and Full to provide the observations on the next slide.
- Starting at Quarter the spectrum images have been overlaid to show relative effects using a spectrum analyzer on peak hold.

Turbo Spectrum Behavior

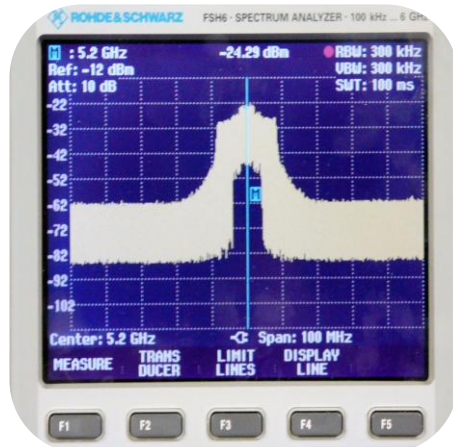
5 MHz Turbo
(Quarter)



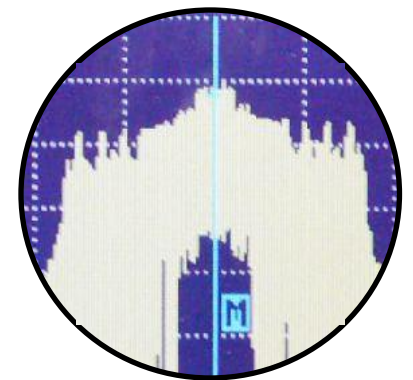
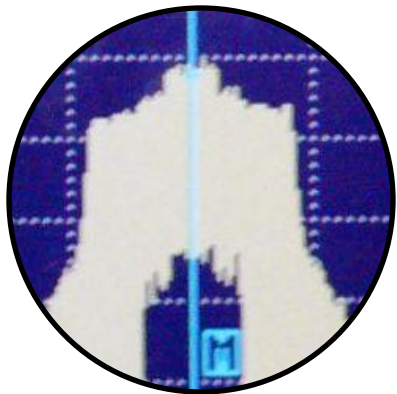
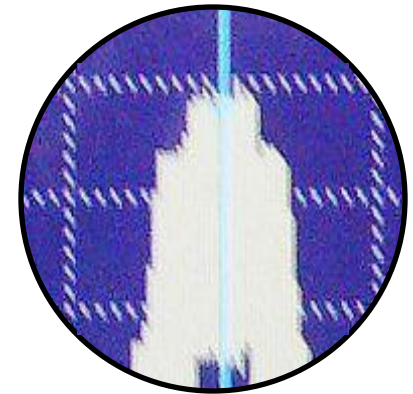
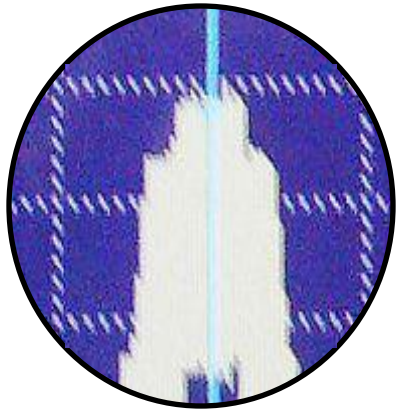
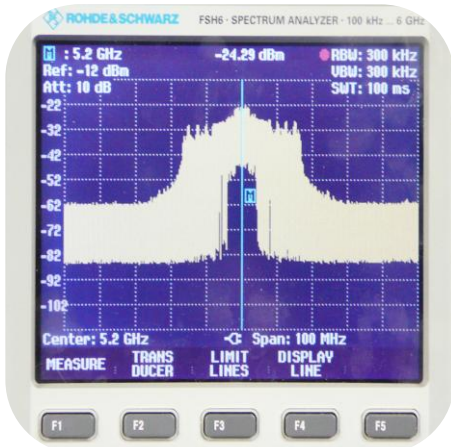
10 MHz Turbo Overlay
(Half)



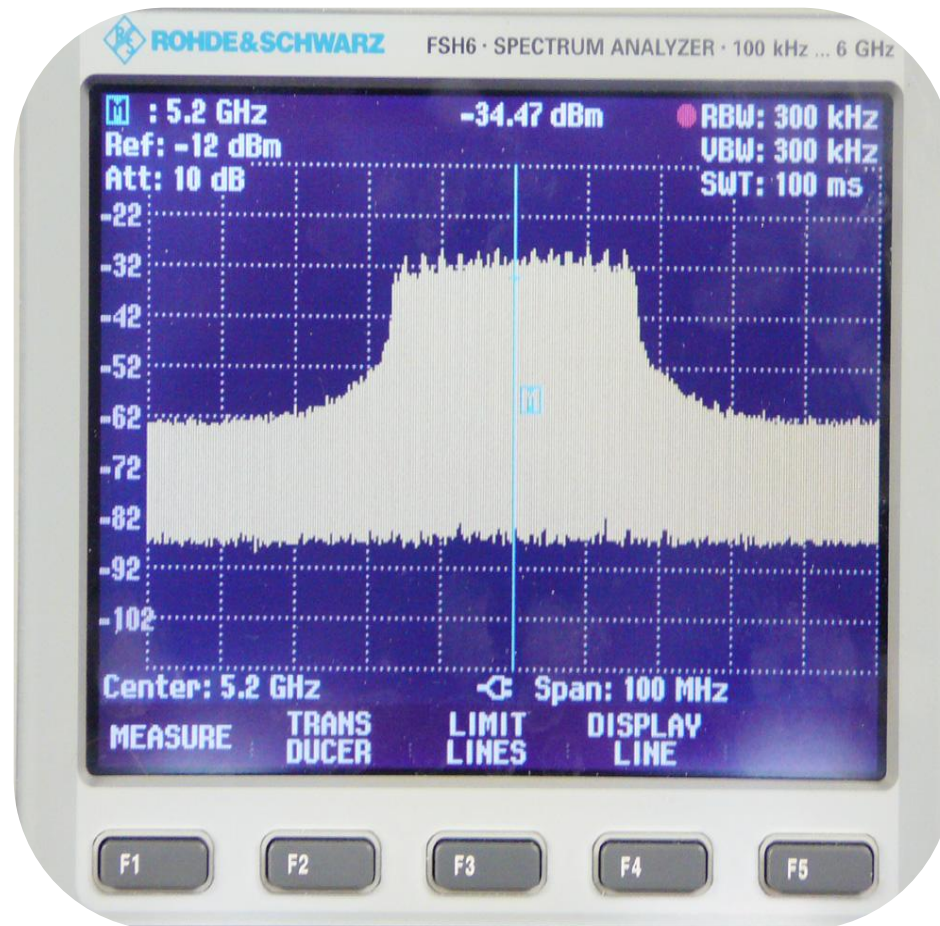
20 MHz Overlay No Turbo
(Full)



40 MHz Turbo Overlay
(Full)



FULL TURBO SPECTRUM (NOT OVERLAYED)





WAVETEQ SHADOWAP



WAVETEQ